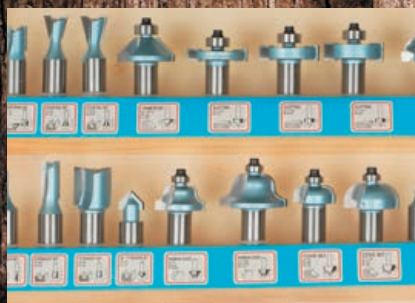


# CROMSON

BOIS | WOODWORKING



EXPERTISE - QUALITY - INNOVATION

---



## Featured Products

CR5137

### Router Bit Carbide Pro Set 35pc 1/2" Shank

Advanced woodworking router bit set - Wide assortment of straight, mortising, grooving, v grooving, dovetail, 1/4 round, beading, roman ogee bits - 1/2" shank - micro grain carbide



CR5135

### Tongue & Groove Tongue & Groove 2pc Set 1/2" Shank

Tongue and groove router bit set with bearings - Join wood from 1/2" to 3/4" thick, 1/2" shank - micro grain carbide



## Finishing

CR5123

### Scraper Burnisher

Works with wood scrapers to keep their edges sharp



CR5111

### 6 Piece Cabinet Scraper Set

For a better finishing than sandpaper - Made of high carbon steel - Ideal for any kind of wood



## Tracing

CR5107

### Wheel Marking Gauge

8" wheel marking gauge brass marker tool - One-hand easy-set design requires no additional tools - Head has a countersink so cutter can be fully retracted protecting it when not in use



CR5102

### Precision Clamping Square 90-degree (2PC/SET)

Precise 90-degree assembly now becomes a simple task



CR5108

### 90-degree Right Angle Clamp Adjustable Swing Corde Clamps (2PC/SET)

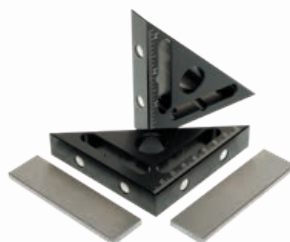
Can hold boards up to 7/8" thick - For 90-degree assembling of boxes, cabinets or drawers, framing, drilling, doweling, and more



CR5119

### Pocket Square (2PC/SET)

Pocket-sized with 45 and 90-degree angles for setting and checking machine parts - Magnetic base



CR5115

### 6" Flexible Curve

Fully adjustable flexible curve ensures an exact curve reproduction - Each segment can be adjusted and locked independently as needed



## Shaping



**CR5130**  
**Multi V Router Bit**  
**1/2" Shank**

Adds a decorative V edge or easily joins wood up to 2" thick - 1/2" shank - micro grain carbide



**CR5132**  
**2" Straight Router Bit**  
**Double Bearing 1/2" Shank**

Top and bottom bearing 2" straight bit - Perfect bit for squaring, following patterns and trimming wood - 2" cutting length - 3/4" diameter - 1/2" shank - micro grain carbide



**CR5131**  
**2" Straight Router Bit**  
**4 Flutes 1/2" Shank**

Perfect for squaring edges on any kind of wood - Exceptional finish and durability on all kinds of wood - 2" cutting length - 1/2" shank, micro grain carbide



**CR5134**  
**Flooring Assembling**  
**Set with V**

Tongue and groove router bit set with bearings - Joins wood from 1/2" to 1" thick, 1/2" shank - micro grain carbide

## Clamping



**CR5103**  
**Adjustable Fence**  
**Clamps (2PC/SET)**

Perfect for holding disposable fence boards for rabbeting or cutting



**CR5104**  
**Drill Press Hold Down**

Quick-adjust column drill table clamp - Attaches to almost any drill press table, a 3/8" opening in the table is all that is needed - 4 1/2" high capacity



**CR5105**  
**F-Clamp Starter Box**

The most useful woodworking clamps in a set - Contains: (2) 6", (2) 8" & (2) 12" F-Clamps, (4) 1" and (2) 2" spring clamps - Wood handles and chrome rails - Plastic protective pads on F-clamps and Spring clamps

## Turning

**CR5109**  
**3-Piece Mini Turning Tool Set**

13" Features a replaceable and rotating cutter - Designed for turning small pieces - Handles are turned from fine solid ash - Set of three shapes: round, square and diamond



**CR5110**  
**3pc Carbide blades for Mini Turning Tool**  
**Set CR5109**

Replacement blades for Mini Turning Tool Set CR5109 - Three shapes offered: round, square and diamond







## Accessories



**CR5114**  
**Workbench Caster Kit**  
**(4PC/SET)**

360-degree heavy duty pivoting retractable 2-3/8" urethane workbench caster, rated for 100 lbs of capacity, giving a total weight capacity of 400 lbs



**CR5120**  
**Universal Tool Adapter**

Handy double-sided adapter steps down from a larger dust collection hose to a smaller shop vacuum hose branch line - Reduce from 2 1/2" to 3/4" - Simply cut where needed - Made with high-quality ABS plastic



**CR5121**  
**4" PVC Hose**  
**10 FT/Roll Grey**

PVC construction with hard PVC cord to resist collapse and increase durability - Smooth interior wall for increased airflow



**CR5122**  
**2 1/2" PVC Hose**  
**10FT/Roll Grey**

PVC construction with hard PVC cord to resist collapse and increase durability - Smooth interior wall for increased airflow

**Your exclusive distributor**